

### Fire Rated System



### Product Description

LuxeWall® FlameGuard® Fire Rated System is a fire rated architectural boundary wall system tested and approved for both FRL 60/60/60 and FRL 90/90/90 for use in commercial and residential applications. LuxeWall® FlameGuard® is a lightweight, conceal fixed and architecturally finished high performance wall product that simplifies installation on zero boundary properties where site access is difficult.

| LuxeWall® FlameGuard® (MW) Thermal Performance Total R-Value (m²K/W) |                |        |        |        |               |        |        |        |
|--|----------------|--------|--------|--------|---------------|--------|--------|--------|
| Framing  | Timber Framing |        |        |        | Steel Framing |        |        |        |
|  | 50mm           |        | 75mm   |        | 50mm          |        | 75mm   |        |
| LuxeWall® FlameGuard® Panel Thickness                                | Summer         | Winter | Summer | Winter | Summer        | Winter | Summer | Winter |
| System 1   | 1.8            | 1.9    | 2.4    | 2.6    | 1.8           | 1.9    | 2.4    | 2.5    |
| System 2   | 2.9            | 3.1    | 3.5    | 3.8    | 2.8           | 3.0    | 3.4    | 3.7    |
| System 3   | 3.3            | 3.6    | 4.0    | 4.2    | 3.2           | 3.4    | 3.8    | 4.1    |

Notes:  
System 1: LuxeWall® FlameGuard® & 10mm Plasterboard  
System 2: LuxeWall® FlameGuard® with R1.5 Batts & 10mm Plasterboard  
System 3: LuxeWall® FlameGuard® with R2.0 Batts & 10mm Plasterboard

For 13mm Plasterboard add 0.02 to above Total R-value.  
For 16mm Plasterboard add 0.04 to above Total R-value.  
Calculations based on AS/NZS 4859.1:2018 & AS/NZS 4859.2:2018.  
Mean temperatures: Summer: 30°C, Winter: 15°C.

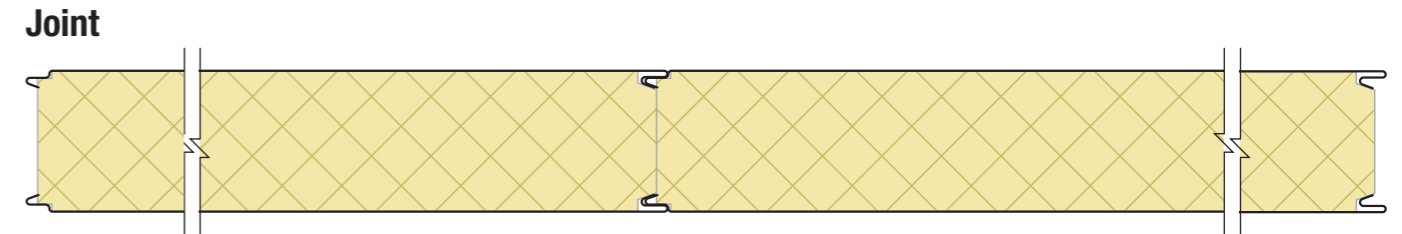
|                         |  |
|-------------------------|--|
| Core                    | MW (Mineral Wool)  |
| Width (cover mm)        | 1200, 900**  |
| Thickness (mm)          | 50, 75 (other thicknesses available on request)          |
| Length                  | Up to 6.5m (check for availability)                      |
| External Material       | BlueScope® COLORBOND® Steel 0.6mm G300                   |
| External Finishes       | Plain (Other options available)**                        |
| Exterior Colour Options | Standard, Matt & Metallic options available              |
| Internal Material       | BlueScope® COLORBOND® Steel 0.6mm G300 with HygienePlus® |
| Internal Finishes       | Plain  |
| Interior Colour Options | Surfmist®  |
| Paint System            | AS/NZS 2728 & AS 1397                                    |
| Acoustic Properties     | Rw 40, 45* depending on construction                     |
| Material Group Numbers  | C1.10 Group 1  |
| Bushfire Attack Level   | BAL-FZ (All exposed core to be covered with flashing)    |
| Combustibility          | AS 1530.1 Non-combustible                                |
| Fire hazard properties  | AS/NZS 1530.3  |
| Ignitability Index      | 0  |
| Spread of Flame Index   | 0  |
| Heat Evolved Index      | 0  |
| Smoke Index             | 2-3  |
| Fire Resistance         | AS 1530.4 FRL 90/90/90                                   |

\*\* Available on request.  
\* Contact Bondor® for construction details required.  
The technical information contained in this document cover a breadth of applications where LuxeWall® FlameGuard® may be used, which may be outside the scope of our CodeMark certificate. Data specific to CodeMark certification can be found on LuxeWall® FlameGuard®'s C/C CM40239.  
SPAN TABLE NOTES:  
1. Batten spacing based on fixing strength, LuxeWall® span and FRL requirement for span to be < 1250mm.  
2. Batten must be checked separately for spans.  
3. Wind speeds and coefficients based on AS 4055 - Wind Loads for Housing.  
4. Wall pressure coefficients based on following assumptions:  
a) External Pressure Cpe = +0.7, -0.65  
b) Internal Pressure - Building has no dominant openings and more than one permeable wall or is effectively sealed. Cpi = +0.2, -0.3  
c) Local Pressure - kl = 2.0 for negative wall pressure within 1200mm of corners  
d) Combination Factor Kc = 0.9  
e) Wall away from corner - Cflg = +0.9, -0.765, Wall within 1200mm of corner Cflg = -1.35  
5. Serviceability deflection limit of span/150 has been allowed for.  
6. Top Hat Battens require 2 fixings per stud and LuxeWall® fixed at 300mm centres.  
7. M6 RoofZips to be used to fix battens into LuxeWall® modules.  
8. Maximum span between fixing points is 1250mm.  
9. Maximum span at panel edge is 250mm.

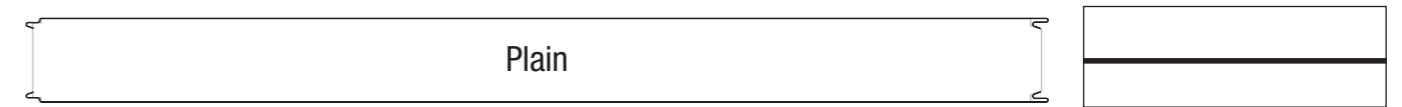
| Standard Span Table |                              |                          |   |         |                |         |                |         |                |         |                |    |
|---------------------|------------------------------|--------------------------|---|---------|----------------|---------|----------------|---------|----------------|---------|----------------|----|
| Wind Classification | Ultimate Wind Pressure (kPa) |                          | Number of Top Hats Battens per Panel                    |         |                |         |                |         |                |         |                |    |
|                     | Away from corners            | Within 1200mm of corners | Wall Height (Panel length in vertical orientation) (mm) |         |                |         |                |         |                |         |                |    |
|                     |                              |                          | ≤2400   |         | ≤2700          |         | ≤3000          |         | ≤3300          |         | ≤6500          |    |
|                     |                              |                          | Panel Location  |         | Panel Location |         | Panel Location |         | Panel Location |         | Panel Location |    |
|                     |                              | Typical                  | Corner  | Typical | Corner         | Typical | Corner         | Typical | Corner         | Typical | Corner         |    |
| N1                  | +0.62, -0.53                 | -0.94                    | 2   | 2       | 2              | 2       | 2              | 2       | 2              | 3       | 3              | 4  |
| N2                  | +0.86, -0.74                 | -1.30                    | 2   | 2       | 2              | 3       | 2              | 3       | 2              | 3       | 4              | 5  |
| N3                  | +1.35, -1.16                 | -2.03                    | 3   | 3       | 3              | 4       | 3              | 4       | 3              | 4       | 5              | 7  |
| N4                  | +2.01, -1.72                 | -3.01                    | 3   | 4       | 4              | 5       | 4              | 5       | 4              | 6       | 7              | 10 |

| Span Table (FRL Applications) |                              |                          |   |         |                |         |                |         |                |         |                |    |
|-------------------------------|------------------------------|--------------------------|---|---------|----------------|---------|----------------|---------|----------------|---------|----------------|----|
| Wind Classification           | Ultimate Wind Pressure (kPa) |                          | Number of Top Hats Battens per Panel                    |         |                |         |                |         |                |         |                |    |
|                               | Away from corners            | Within 1200mm of corners | Wall Height (Panel length in vertical orientation) (mm) |         |                |         |                |         |                |         |                |    |
|                               |                              |                          | ≤2400   |         | ≤2700          |         | ≤3000          |         | ≤3300          |         | ≤6500          |    |
|                               |                              |                          | Panel Location  |         | Panel Location |         | Panel Location |         | Panel Location |         | Panel Location |    |
|                               |                              | Typical                  | Corner  | Typical | Corner         | Typical | Corner         | Typical | Corner         | Typical | Corner         |    |
| N1                            | +0.62, -0.53                 | -0.94                    | 3   | 3       | 3              | 3       | 4              | 4       | 4              | 4       | 6              | 6  |
| N2                            | +0.86, -0.74                 | -1.30                    | 3   | 3       | 3              | 3       | 4              | 4       | 4              | 4       | 6              | 6  |
| N3                            | +1.35, -1.16                 | -2.03                    | 3   | 3       | 3              | 4       | 4              | 4       | 4              | 4       | 6              | 7  |
| N4                            | +2.01, -1.72                 | -3.01                    | 3   | 4       | 4              | 5       | 4              | 5       | 4              | 6       | 7              | 10 |

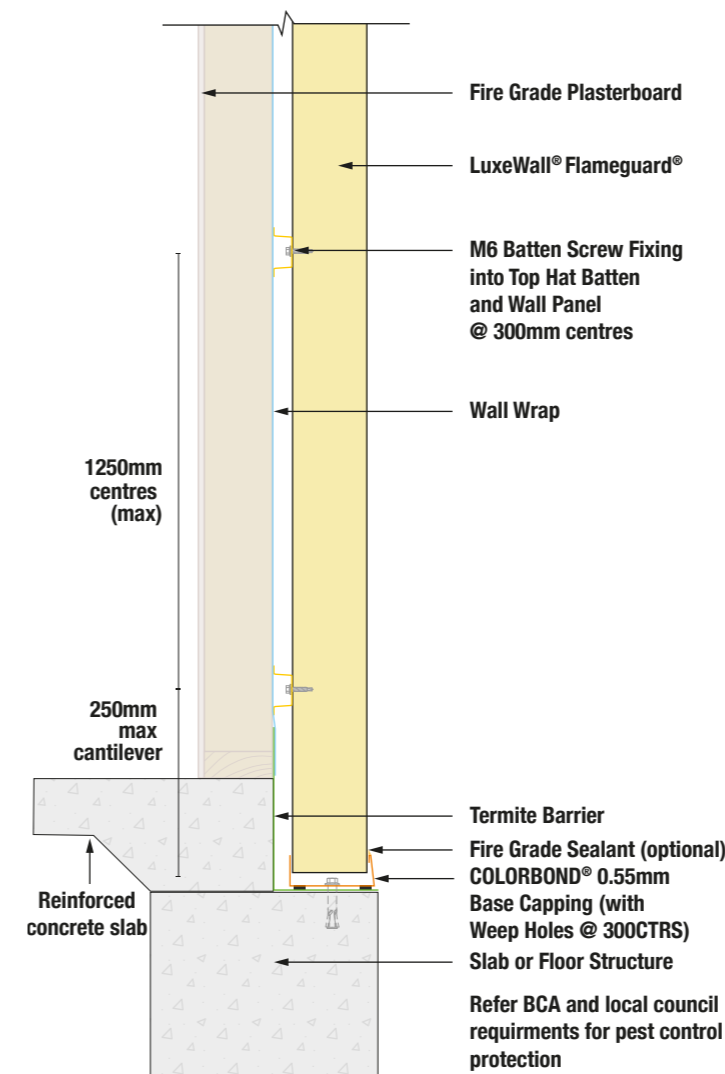
### Fire Rated System



### Profiles



### Dimensions



Leaders in Thermal & Architectural Building Solutions

To connect to your nearest Bondor® branch simply call 1300 300 099 or visit [www.bondor.com.au](http://www.bondor.com.au)

Metecno Pty Limited. ABN 44 096 402 934. The manufacturer reserves the right to change the specification without notice. Bondor®, Equitilt®, BondorPanel®, FlameGuard®, FlameGuard® Plus, MetecnoPanel®, MetecnoInspire®, EconoClad®, MetecnoKasset®, MetecnoTherm®, InsuWall®, LuxeWall®, DesignerWall®, SolarSpan®, InsulRoof®, MetecnoSpan®, CoolRoof®, Equideck®, InsuLiving®, Metecno® are trademarks of Metecno Pty Limited. BlueScope, COLORBOND®, Intramax™ and colour names are trademarks of BlueScope Steel Limited. The colours shown in this publication have been reproduced to represent actual product colours as accurately as possible. However, given printing limitations, we recommend checking your chosen colour against an actual sample before placing orders. This advice is of a general nature only. Designers must provide for adequate structural performance and other Building Code requirements. \*Conditions may apply. \*\*Limited availability, minimum order quantity may be required. †Check with NCC for permissible solar absorptance before selecting the exterior roof colour. Darker colours may be warranted for use in limited regions refer to [www.bondor.com.au](http://www.bondor.com.au) as this information is subject to change. Consult Bondor® for your application. BOND126 Tech Data Sheets - LuxeWall Flameguard v7. 06/07/2021