

### Fire Rated System



### Product Description

LuxeWall FlameGuard® Fire Rated System is a fire rated architectural boundary wall system tested and approved for both FRL 60/60/60 and FRL 90/90/90 for use in commercial and residential applications. LuxeWall FlameGuard® is a lightweight, conceal fixed and architecturally finished high performance wall product that simplifies installation on zero boundary properties where site access is difficult.

LuxeWall FlameGuard® (MW) Thermal Performance Total R-Value (m²K/W)										
Framing	Timber Framing				Steel Framing					
	50mm		75mm		50mm		75mm			
LuxeWall FlameGuard® Panel Thickness	Summer	Winter	Summer	Winter	Summer	Winter	Summer	Winter	Summer	Winter
System 1	1.8	1.9	2.4	2.6	1.8	1.9	2.4	2.5		
System 2	2.9	3.1	3.5	3.8	2.8	3.0	3.4	3.7		
System 3	3.3	3.6	4.0	4.2	3.2	3.4	3.8	4.1		

Notes:  
System 1: LuxeWall FlameGuard® & 10mm Plasterboard  
System 2: LuxeWall FlameGuard® with R1.5 Batts & 10mm Plasterboard  
System 3: LuxeWall FlameGuard® with R2.0 Batts & 10mm Plasterboard

For 13mm Plasterboard add 0.02 to above Total R-value.  
For 16mm Plasterboard add 0.04 to above Total R-value.  
Calculations based on AS/NZS 4859.1:2018 & AS/NZS 4859.2:2018.  
Mean temperatures: Summer: 30°C, Winter: 15°C.

Standard Span Table												
Wind Classification	Ultimate Wind Pressure (kPa)		Number of Top Hats Batts per Panel									
			Wall Height (Panel length in vertical orientation) (mm)									
	Away from corners		≤2400		≤2700		≤3000		≤3300		≤6500	
			Panel Location		Panel Location		Panel Location		Panel Location		Panel Location	
		Typical	Corner	Typical	Corner	Typical	Corner	Typical	Corner	Typical	Corner	
N1	+0.62, -0.53	-0.94	2	2	2	2	2	2	2	3	3	4
N2	+0.86, -0.74	-1.30	2	2	2	3	2	3	2	3	4	5
N3	+1.35, -1.16	-2.03	3	3	3	4	3	4	3	4	5	7
N4	+2.01, -1.72	-3.01	3	4	4	5	4	5	4	6	7	10

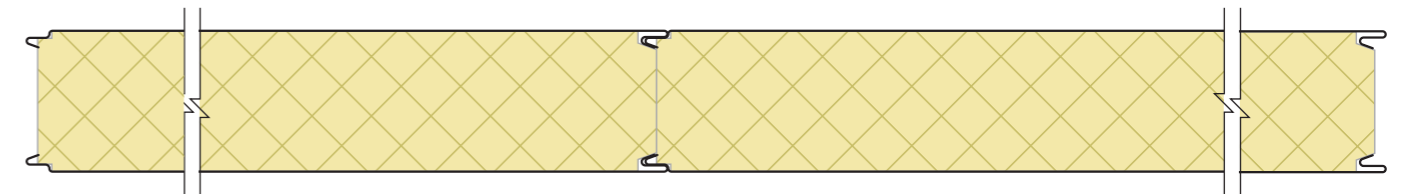
Span Table (FRL Applications)												
Wind Classification	Ultimate Wind Pressure (kPa)		Number of Top Hats Batts per Panel									
			Wall Height (Panel length in vertical orientation) (mm)									
	Away from corners		≤2400		≤2700		≤3000		≤3300		≤6500	
			Panel Location		Panel Location		Panel Location		Panel Location		Panel Location	
		Typical	Corner	Typical	Corner	Typical	Corner	Typical	Corner	Typical	Corner	
N1	+0.62, -0.53	-0.94	3	3	3	3	4	4	4	4	6	6
N2	+0.86, -0.74	-1.30	3	3	3	3	4	4	4	4	6	6
N3	+1.35, -1.16	-2.03	3	3	3	4	4	4	4	4	6	7
N4	+2.01, -1.72	-3.01	3	4	4	5	4	5	4	6	7	10

Core	MW (Mineral Wool)
Width (cover mm)	1200, 900^
Thickness (mm)	50, 75 (other thicknesses available on request)
Length	Up to 6.5m (check for availability)
External Material	BlueScope® COLORBOND® Steel 0.6mm G300
External Finishes	Plain (other options available)^
Exterior Colour Options	Standard, Matt & Metallic options available
Internal Material	BlueScope® COLORBOND® Steel 0.6mm G300 with HygienePlus®
Internal Finishes	Plain
Interior Colour Options	Surfmist®
Paint System	AS/NZS 2728 & AS 1397
Acoustic Properties	Rw 40, 45* depending on construction
Material Group Numbers	Group 1
Bushfire Attack Level	BAL-FZ (All exposed core to be covered with flashing)
Combustibility	AS 1530.1 Non-combustible
Fire hazard properties	AS/NZS 1530.3
Ignitability Index	0
Spread of Flame Index	0
Heat Evolved Index	0
Smoke Index	2-3
Fire Resistance	AS 1530.4 FRL 90/90/90

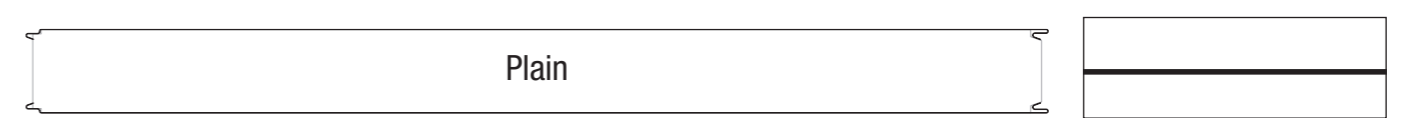
^ Available on request.  
\* Contact Bondor® for construction details required.  
The technical information contained in this document cover a breadth of applications where LuxeWall FlameGuard® may be used, which may be outside the scope of our CodeMark certificate. Data specific to CodeMark certification can be found on LuxeWall FlameGuard®'s CoC CM40239.  
SPAN TABLE NOTES:  
1. Batten spacing based on fixing strength, LuxeWall FlameGuard® span and FRL requirement for span to be < 1250mm.  
2. Batten must be checked separately for spans.  
3. Wind speeds and coefficients based on AS 4055 - Wind Loads for Housing.  
4. Wall pressure coefficients based on following assumptions:  
a) External Pressure Cpe = +0.7, -0.65  
b) Internal Pressure - Building has no dominant openings and more than one permeable wall or is effectively sealed. Cpi = +0.2, -0.3  
c) Local Pressure - kl = 2.0 for negative wall pressure within 1200mm of corners  
d) Combination Factor Kc = 0.9  
e) Wall away from corner - Clig = +0.9, -0.765, Wall within 1200mm of corner Clig = -1.35  
5. Serviceability deflection limit of span/150 has been allowed for.  
6. Top Hat Battens require 2 fixings per stud and LuxeWall FlameGuard® fixed at 300mm centres.  
7. M6 RoofZips to be used to fix battens into LuxeWall FlameGuard® modules.  
8. Maximum span between fixing points is 1250mm.  
9. Maximum span at panel edge is 250mm.

### Fire Rated System

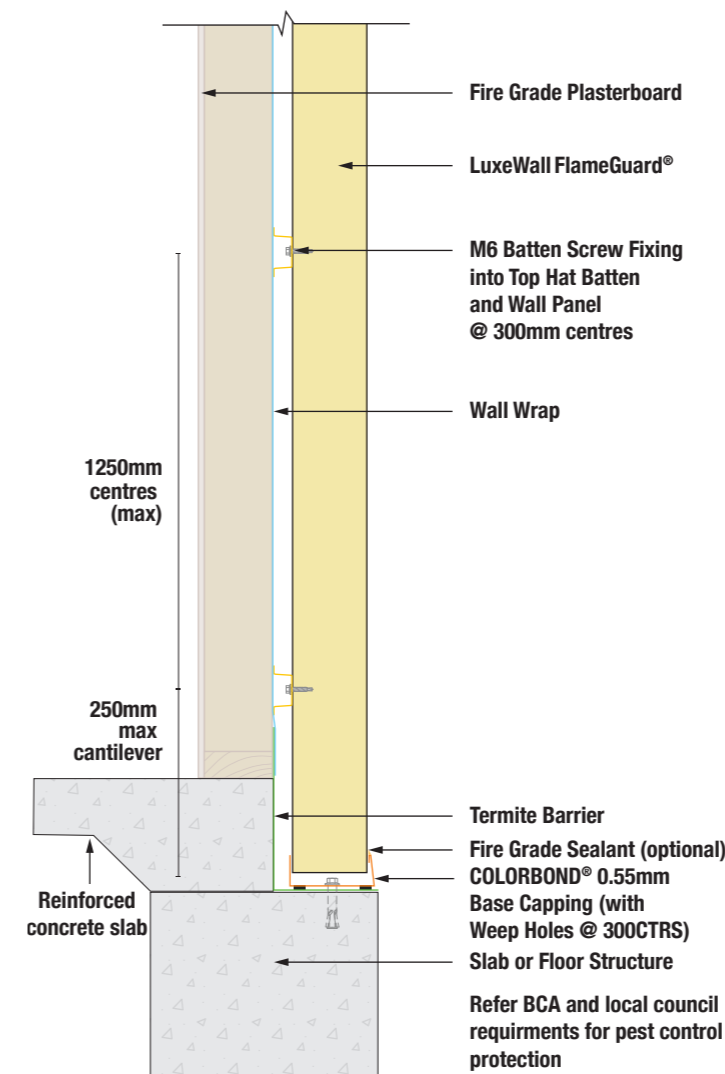
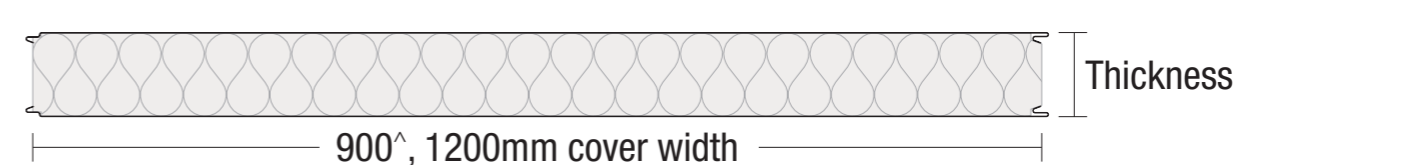
#### Joint



#### Profiles



#### Dimensions



Leaders in Thermal & Architectural Building Solutions

To connect to your nearest Bondor® branch simply call 1300 300 099 or visit [www.bondor.com.au](http://www.bondor.com.au)